



# ROSEBUD CONSTRUCTION

a tribally-owned construction firm with design, build, and management capabilities.



## About Us

Rosebud Construction, Inc. (RCI) is a subsidiary of the Rosebud Economic Development Corporation, and a part of the Sicangu Co ecosystem, which takes a holistic approach to revitalize the economy and culture of the Sicangu Lakota Oyate.

With teams based out of Rapid City and Mission, South Dakota, RCI is able to complete projects across a large service area.

RCI offers full-service design, build, and construction management and has a track record of excellence, both on and off the reservation.



Indian-Owned Economic Enterprise



Buy Indian Act Certified



[www.sicangu.co/construction](http://www.sicangu.co/construction)



(605) 791-7010



[www.facebook.com/Sicangu.Co](https://www.facebook.com/Sicangu.Co)



[kel@sicangu.co](mailto:kel@sicangu.co)



# ROSEBUD CONSTRUCTION

## Differentiators

### Commitment to Community

As part of the Sicangu Co ecosystem, we are committed to helping our community: the Sicangu Oyate. We create good-paying jobs and opportunities for our workers to provide for their family and our profits are re-invested in community development .

### Full-Service Capabilities

We offer both design and build services, which helps your project stay on time by avoiding unnecessary transitions

### Faster Turnaround

With an architect on-staff, we are able to get quick answers to questions during both the design and build phases

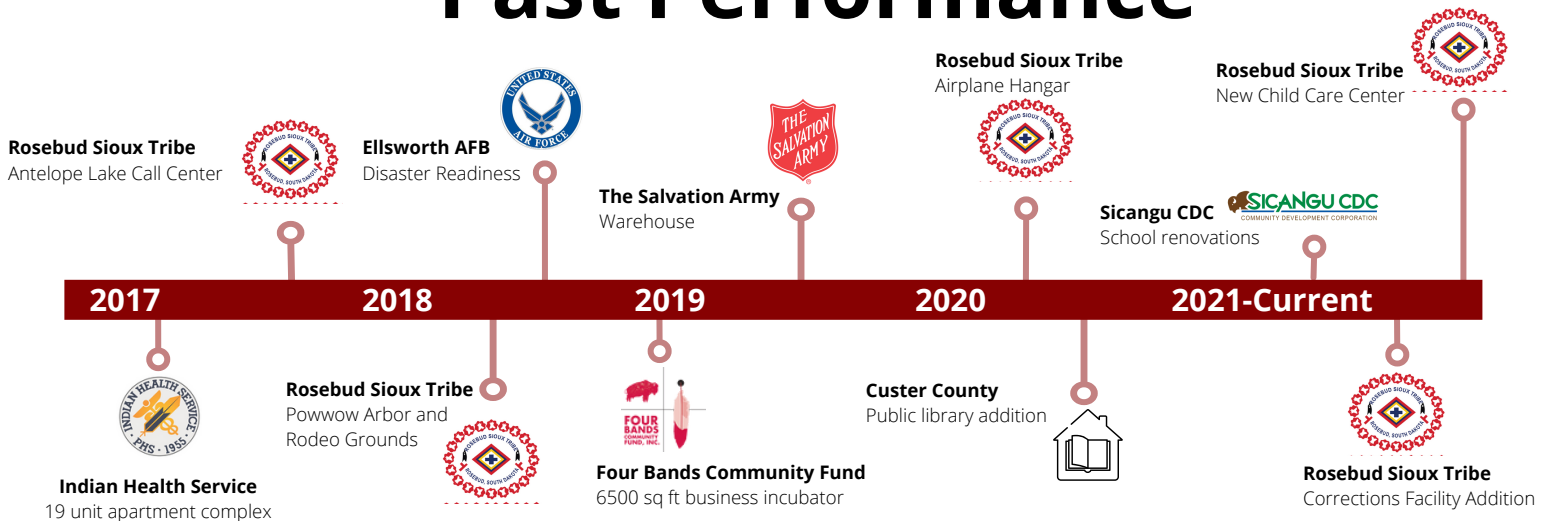
### Eco-Friendly Approach

As Lakota, we carry our tradition of land stewardship with us through the design and construction process

### Cutting Edge Technology

With both a 3D printer and virtual reality simulator in-house, you can visualize the final product before breaking ground

## Past Performance



[www.sicangu.co/construction](http://www.sicangu.co/construction)



(605) 791-7010



[www.facebook.com/Sicangu.Co](https://www.facebook.com/Sicangu.Co)



[kel@sicangu.co](mailto:kel@sicangu.co)